

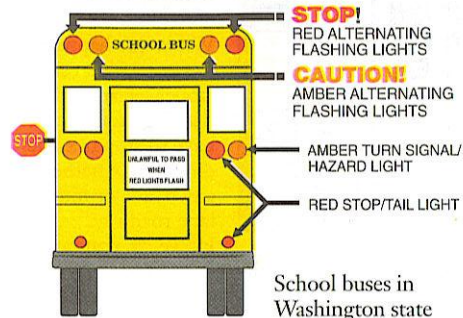
Did you know ...

- that more children are killed or injured outside a school bus every year than inside one?
- that most of these deaths and injuries occur during daylight hours and in clear weather?
- that nationwide statistics show a dramatic increase in these types of loading zone injuries?
- that children react differently than adults to traffic situations?
 - They act impulsively, can be preoccupied and act spontaneously, disregarding safety, darting out into traffic.
 - They do not understand vehicle speed or required stopping distances.
 - They are not aware that their physical size limits their ability to be seen.
 - They do not recognize the school bus driver's limitations when controlling traffic.
- that violation of these laws can result in a citation permanently affecting your driver record?
- the fine for passing a stopped school bus displaying flashing red lights is a minimum of \$327.

Traffic accidents kill and injure more of our children every year than any other cause — more than disease, kidnapping, drownings, falls or drug abuse.

**BE RESPONSIBLE.
WATCH OUT FOR CHILDREN.**

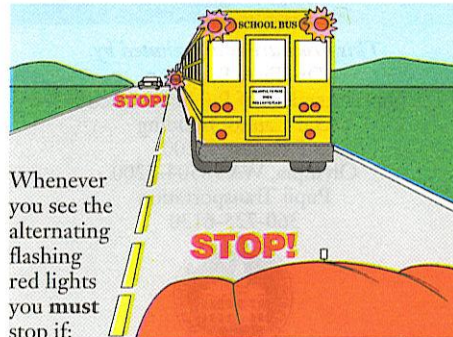
WASHINGTON STATE SCHOOL BUS LAW



School buses in Washington state

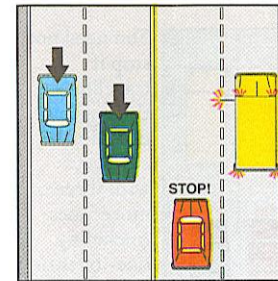
are equipped with important lighting systems to warn you, the motorist, when they are about to stop to load or unload students, or are in the process of doing so.

For example, whenever you see the alternating flashing amber lights on top of the front and back of the bus, this means the school bus is about to stop to load or unload school children. You should be cautious and slow down. The bus is going to stop on the roadway.

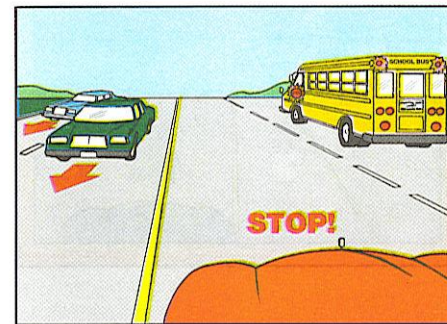


Whenever you see the alternating flashing red lights you must stop if:

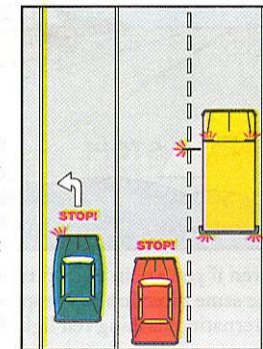
- you are on a two lane roadway (one lane in each direction).
- you are on a multiple lane roadway (three or more lanes) and you are traveling in the same direction as the bus.



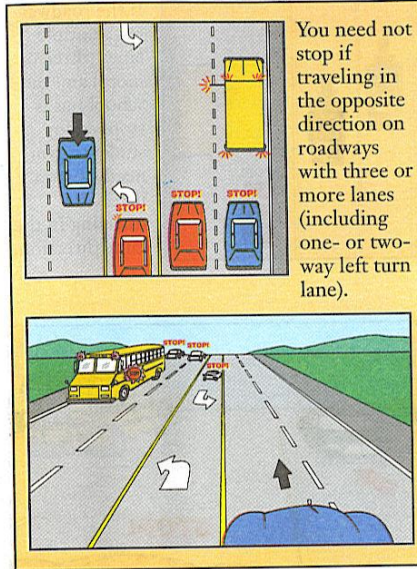
If the roadway has multiple lanes (three or more) and the school bus is stopped for students, you need stop only if you are traveling in the same direction.



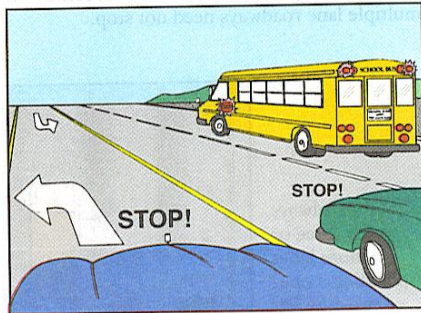
Cars traveling in the **opposite** direction on multiple lane roadways need not stop.



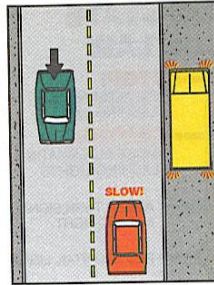
On roadways with three or more lanes (including a one- or two-way left turn lane), you must stop when traveling in the same direction.



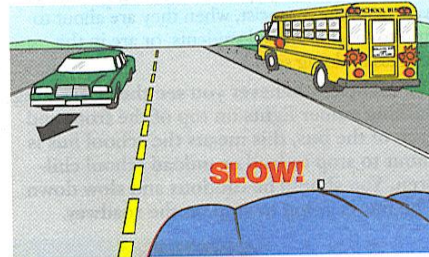
You need not stop if traveling in the opposite direction on roadways with three or more lanes (including one- or two-way left turn lane).



Even if you are in the left turn lane traveling in the same direction as a stopped school bus with alternating flashing red lights, you must stop.



A school bus may pull completely off the roadway to load or unload students. When this happens, the bus will have its amber hazard lights flashing. You do not have to stop in either direction, whether on a two lane or multiple lane roadway. However, you must slow down and use caution as you pass the bus.



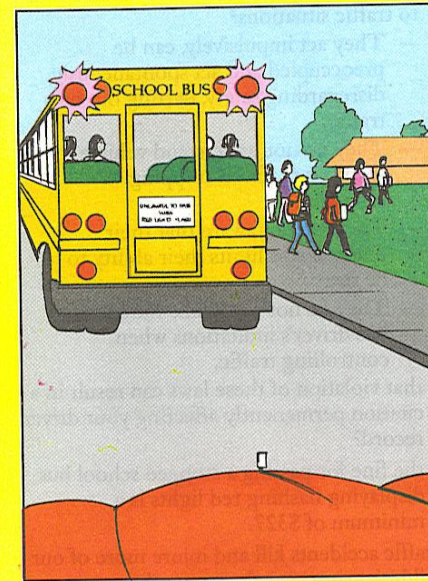
This brochure is distributed by:
 Dr. Terry Bergeson
 Superintendent of Public Instruction
 Old Capitol Building
 P.O. Box 47200
 Olympia, WA 98504-7200
 Pupil Transportation
 360-725-6120



Funding for this project was provided by the Washington Traffic Safety Commission
 Copyright © 2002 by Outdoor Empire Publishing, Inc.
 All rights reserved. Not to be reproduced in whole or in part without written permission from Outdoor Empire Publishing, Inc., P.O. Box 19000, Seattle, WA 98109. #19288

STOP

for the
SCHOOL BUS



IT'S THE LAW!